

# GEORGIA PTA 10<sup>TH</sup> DISTRICT

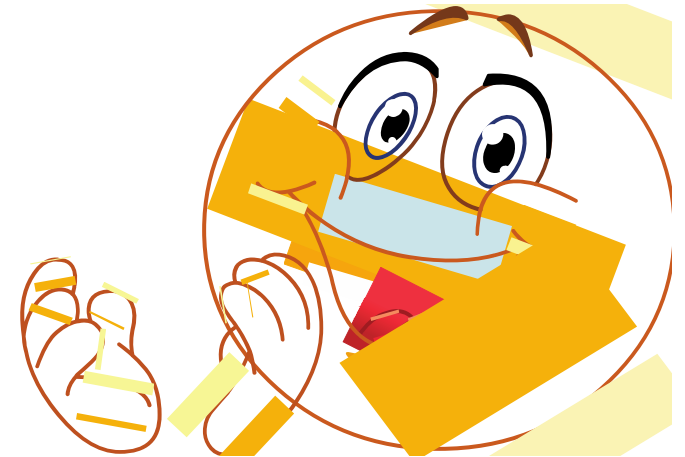
**District Meeting – June 25, 2016**

---

**Georgia**  
**PTA**<sup>®</sup>  
*everychild.one voice.*<sup>®</sup>

# Welcome everyone!

## If this is your first CLT, please stand up!



We are so glad that you are here whether this is your first CLT or your 10<sup>th</sup>. THANK YOU for your leadership!

**Welcome everyone!**

**If you have attended more than 10  
CLTs, please stand up!**

Now that is dedication! **THANK YOU** for your continued leadership!

# 10<sup>TH</sup> DISTRICT OFFICERS FOR 2015-2017

- District Director – Lisa Martin, Hillside ES – NFC
- 1<sup>st</sup> Assistant Director – Open
- 2<sup>nd</sup> Assistant Director – Open
- Secretary – Open
- Treasurer – Sherry Flagg, Chattahoochee HS, NFC

## **Standing Committee Chairs**

- Legislative – Detrius Jones, SFC
- Social Media – Tunieka Brown, NFC
- Website – John Martin, NFC

## **Council Presidents**

- Priscilla Borders, Atlanta Council
- Vickie Riccardo and John Martin, NFC
- Alice McNabb, SFC

## **State Board Members**

- Sandra Perrino, Bylaws Chair
- Margie Ringfield, Atlanta Council

# DISTRICT'S ROLE

- Support Council leadership
- Assist with training Council and Local Units
- Represent our Local Units and Councils at the state level
- Answer questions and provide direction
- Attend PTA meetings and events
- Attend school board meetings
- Host annual Fall and Spring Conferences
- **Share information to help you succeed!**

# LEVELS OF PTA SUPPORT

- Your Local Unit
- Your Council
- 10<sup>th</sup> District of Georgia PTA
- Georgia PTA
- National PTA



# 10<sup>TH</sup> DISTRICT DETAILS

- Our territory includes only Fulton County which is comprised to two public school systems, APS and FCS.
- We serve **3** Councils and 153 local units
- We represent over 33,000 members but we have approximately 150,000 students so we have room to grow.
- To compare: District 9 is *Cobb, Douglas, Paulding, Polk, Carroll and Haralson with 7 councils and 75,000 members and is the largest district in Georgia.*

# 10<sup>TH</sup> DISTRICT DETAILS

3 Councils:

- Atlanta (67 local units)
- North Fulton (48 local units)
- South Fulton (38 local units)



## **WELCOME TO OUR NEWLY CHARTERED UNITS**

- College Park Elementary School PTA (SFC)
- E. L. Connally Elementary School PTA (Atlanta)
- Mimosa Elementary School PTA (NFC)
- Vickery Mill Elementary School (NFC)

# SUMMER PLANNING – HAVE YOU....?

- Submitted your **officers** to Georgia PTA?
  - *These are due May 1<sup>st</sup> each year and should include your principal, executive committee and chairs.*
- Met with your **Principal** to discuss your shared goals?
- Had an EC meeting and set your **goals** for the year?
- Established your **PTA calendar** for the year?
- Created your **Membership** and **Fundraising** campaigns?
- Promoted **Reflections**?
- Sent in your **audit** to Georgia PTA?
  - *These are due by September 30<sup>th</sup> each year.*

# “IN GOOD STANDING”

- Adheres to the purposes and basic policies of the PTA;
- Remits the state and national portion of **membership dues**, on a **monthly basis**;
- Has **bylaws** approved according to the procedures of each state;
- Submits an annual **audit report** to the state office by the last business day of **September**;
- Shall submit annually to the Internal Revenue Service (IRS), the appropriate **Form 990** by the applicable IRS due date. (send the 990 Verification Sheet found under Forms section of Georgia PTA website to Georgia PTA state office); and
- Council Dues paid in accordance to your Local Unit bylaws

# “IN GOOD STANDING”

Local units must be in good standing in order to participate in the **Reflections Program**; apply for Georgia or National PTA **scholarships** and/or grants (including Georgia PTA scholarships for students); submit **reports** and be eligible for **awards**; and attend state or national convention as **voting delegates**.

*In addition to being in good standing, Georgia PTA encourages all PTAs to be **incorporated** and have **insurance coverage** to meet core requirements.*

# INCORPORATION

Georgia PTA will bill your local unit annually in the fall for the \$30.00 renewal fee.

**By incorporating a PTA legally insulates or protects its officers and volunteers from being personally liable or responsible for a PTA's debts and obligation.**

# 501(C)(3) STATUS

PTAs are classified as tax-exempt 501(c)(3) organizations.

## ***What does this mean?***

It means your PTA is exempt from paying Federal Income Taxes on money earned by the PTA for use in its programs. This also means that donors may deduct charitable contributions to local units, councils and districts as provided by the IRS.

*Every Board member is responsible for understanding what it means to be a tax-exempt organization and for helping to protect that status. Encourage every board member to read the Financial Management (Section 5) of the Leadership Resource Guide.*

# RESOURCES

Georgia PTA Website: [www.georgiapta.org](http://www.georgiapta.org)

National PTA Website: [www.pta.org](http://www.pta.org)

## Back to School Kit by National PTA

[www.ptakit.org](http://www.ptakit.org)



# CONNECT WITH US ONLINE



## Facebook

- GA PTA 10<sup>th</sup> District
- Georgia PTA
  - Georgia PTA Membership Moments
- National PTA

### District Website:

<http://www.gaptadistrict10.com>

### Council Websites:

North Fulton – <http://nfcpta.org>

South Fulton – <http://southfultoncouncilpta.com>



## Twitter

@GeorgiaPTA



# LEADERSHIP RESOURCE GUIDE

**Your resource for all things PTA related!**

PDF of the Leadership Resource Guide (LRG) is on your thumb drive.

It is also on the Georgia PTA website ([www.georgiapta.org](http://www.georgiapta.org)).

*It is critical for officers to read the section in the LRG that pertains to their office, especially Treasurers. Most PTA questions you will have can be answered in your bylaws or in the LRG*

# YOUR LOCAL UNIT BYLAWS

- Bylaws are the rules the local unit must follow.
- They are adopted and amended by a vote of your unit's members at a general meeting.
- If you can't find a copy of your unit's bylaws
  - **Email [gapta@bellsouth.net](mailto:gapta@bellsouth.net) and copy your council president.**
- All officers should be familiar with the local unit bylaws.
  - **Training if available if they have questions/concerns.**
- Any member has a right to view them.

# E-LEARNING AT PTA.ORG AND GEORGIA PTA

<https://www.pta.org/elearning>



## Georgia PTA Online Training

<https://vimeo.com/georgiaptatraining>

Training for President, Treasurer, Secretary, Membership, Reflections, Family Engagement, How to Fill an Officer Vacancy, Nominations & Elections... and many more!

President and Treasurer training offered in Spanish!



# MEMBERSHIP!

- Special Workshops Coming to each council's SOI and District 10 Fall Conference – dates TBA
- Membership Workshop at PTA University at our state office of Georgia PTA – August 25, 2016 10a-12p
- (RSVP to [gapta@bellsouth.net](mailto:gapta@bellsouth.net))

# YOU ARE NOT AN ISLAND...

- Reach out to your Council and District Officers
- Talk to other PTA leaders from other schools
- Don't reinvent the wheel!

We are here to support and guide you the entire way.



# IMPORTANT D10 DATES

**10<sup>th</sup> District Fall Conference - October 2016**

**South Fulton – for North Fulton PTAs – Please  
Carpool!**

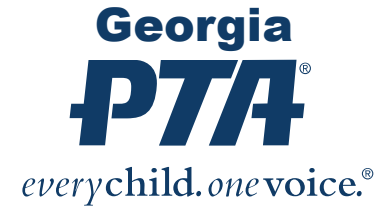
**10<sup>th</sup> District Spring Conference – March 2017**

**North Fulton – for South Fulton PTAs – Please Carpool!**

- ***Did you know - It is the responsibility of each local unit to have one board member in attendance.***

***\*\* Update those in attendance at the District 10 meeting voted to have the meeting on a Saturday morning.***

# GEORGIA & NATIONAL PTA EVENTS



## **Advocacy Conference**

October, 2016

## **National PTA Legislative Conference**

March 7-9, 2017

## **Youth Advocacy Day**

TBA

## **PTA Day at the Capitol**

March, 2017

## **Georgia PTA Convention Leadership Training**

June 15-17, 2017

## **National PTA Convention in Las Vegas, NV**

June 22-25, 2017



**Georgia**  
**PTA**<sup>®</sup>

*everychild.one voice.*<sup>®</sup>

**Questions or comments?**  
**Email [lmartin@georgiapta.org](mailto:lmartin@georgiapta.org)**



**Thank you for attending!**  
**Have a great year!**

---

**10<sup>TH</sup> DISTRICT MEETING**  
**JUNE 25, 2016**

**Georgia**  
**PTA<sup>®</sup>**  
*everychild.one voice.<sup>®</sup>*